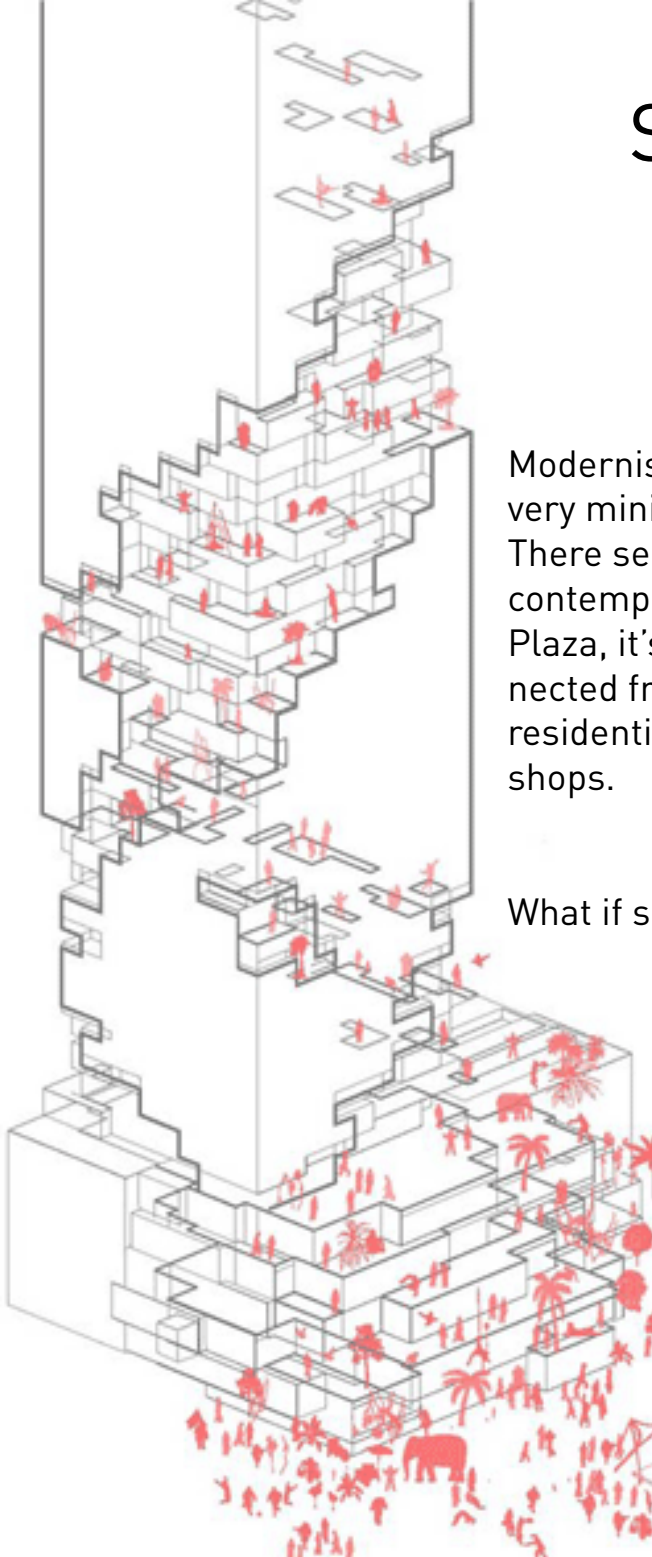


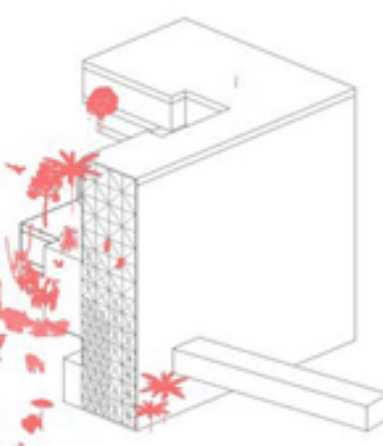
SQUATTERS TO CITIZENS

rethinking the role of skyscrapers in Yangon



Modernism in architecture depicted in the works of Mies Van Der Rohe for example glorifies a very minimalist looking structure and glazed windows through the notorious quote “less is more”. There seems to be an almost intentional will to dehumanize architecture, as an object to be contemplated in the middle of the city. Today, this trend is still very present, looking at Myanmar Plaza, its strips could remind us of Jean Paul Gauthier’s “the Marinière” style, completely disconnected from its context, not only in shape but in program as well, bringing to a local middle class residential neighborhood a Western lifestyle with foreign banks and high end sun glass brand shops.

What if skyscrapers could serve other purposes ?



Inclusive development is crucial for a city’s well being, this proposal is making a statement to welcome back the “left-over” people of our society into our cities as recognized citizens with basic human rights to decent housing. Architecture has the ability to address social concerns and change the shape of a city to resolve these conflicts through design. Architects should be catalyst to participatory processes for solution finding instead of patronizing technocrats who impose their vision of the world and subjective perception of beauty.



In the album “Random Access Memories” (2013), by Daft Punk the song “Giorgio by Moroder”, Giorgio says:
“You want to free your mind about a concept of harmony and of music being correct,
You can do whatever you want
So nobody told me what to do, and there was no preconception of what to do”

Experimenting different forms of aesthetics gives us the changes to explore new possibilities in architecture outside the conventional frame of academic standards and textbook definitions. The same thought process can also be pushed into space organization and program. Challenging the current skyline in Yangon with new buildings proposes a new symbol for the city, as a new vision for development. In the context of emerging capitalist architecture portrayed by the overwhelming number of shopping centers and high-end condominiums popping out of the ground like daisies, a new typology of building is much needed to address local concerns and needs. Squatters have been living on the margins of society in Yangon, benefiting from the abandoned colonial buildings downtown to seek refuge. However the struggle is real, they lack human basic rights that include access to school, a roof and food. This workshop is an opportunity to explore radical ideas that would change this status quo and provide new frontiers for Yangon.

The architecture of the future is the architecture of the people.

Workshop Schedule

Saturday May 4th:

- 13:30 Introduction YTU classroom
- 14:30/18:00 Site visit measurements, photos, sketches, interviews ...

Sunday May 5th:

- 9:00/16:00 Atelier YTU classroom
- 16:00/17:00 Grasshopper Tutorial introduction
- 17:00/18:00 Group session (site analysis and concept creation)

Monday May 6th:

- 9:00/16:00 Atelier YTU classroom
- 16:00/17:00 Grasshopper Tutorial (if requested by workshop participants)
- 17:00/18:00 Group session + Lecture (Invitation of guest speaker)

Tuesday May 7th:

- 9:00/16:00 Atelier YTU classroom
- 16:00/17:00 Grasshopper Tutorial
- 17:00/18:00 Group session

Wednesday May 8th:

- 9:00/16:00 Atelier YTU classroom
- 16:00/17:00 Grasshopper Tutorial (if requested by workshop participants)
- 17:00/18:00 Group session + Lecture (Invitation of guest speaker)

Saturday May 11th:

- Interim Presentation, in YTU classroom

Sunday May 12th:

- 9:00/16:00 Atelier YTU classroom
- 16:00/17:00 Grasshopper Tutorial
- 17:00/18:00 Group session

Monday May 13th:

- 9:00/16:00 Atelier YTU classroom
- 16:00/17:00 Grasshopper Tutorial (if requested by workshop participants)
- 17:00/18:00 Group session + Lecture (Invitation of guest speaker)

Tuesday May 14th:

- 9:00/16:00 Atelier YTU classroom
- 16:00/17:00 Grasshopper Tutorial
- 17:00/18:00 Group session

Wednesday May 15th:

- 9:00/16:00 Atelier YTU classroom
- 16:00/17:00 Grasshopper Tutorial (if requested by workshop participants)
- 17:00/18:00 Group session + Lecture (Invitation: Kristof Crolla - Assistant teacher at CUHK)

Thursday May 16th:

- 9:00/16:00 Atelier YTU classroom
- 16:00/17:00 Grasshopper Tutorial
- 17:00/18:00 Group session

Friday May 17th:

- 10:00/14:30 Final Presentation, in YTU classroom

Before

4-5th of May 8:30am-12:30pm

Parametric Design in GrassHopper (Level 1)

Hosted by Inception - A Studio for Architects & Designers

During

4-17th of May 9:00am-18:00pm

Design Workshop with Internim crit and Final Presentation

Hosted by YTU (Yangon Technological University)

After

17th of May - 4th of April

Submission proposal to "Skyhive 2019 Skyscraper Challenge"

One team will be offered a free registration

Hosted by 'Blue Temple', one partner will join the team



INTERNATIONAL ARCHITECTURE COMPETITION

SKYHIVE 2019 SKYSCRAPER CHALLENGE

 **US \$6,000**
Prize

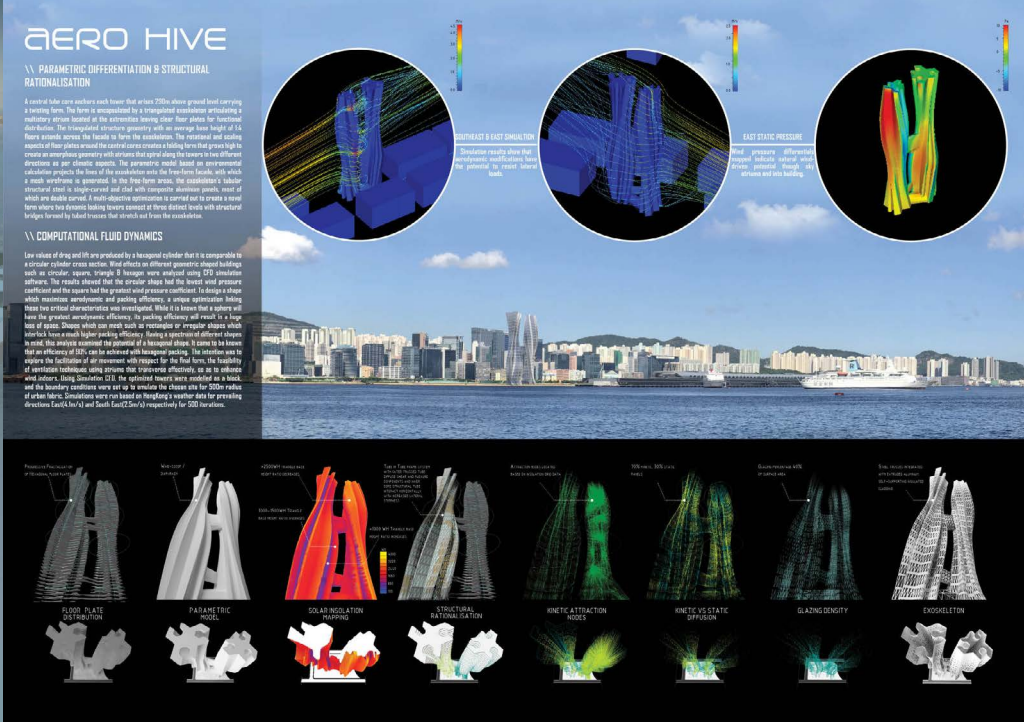
 **07 MAY, 2019**
Registration deadline

[REGISTER NOW](#)

FOLLOW US

- 
- 
- 
- 

Skyhive 2018 Skyscraper Challenge - 1st Prize Winner:



SUBMISSION REQUIREMENTS

- Participants are required to upload four (4) A2 landscape-orientated presentation boards (must not exceed 5mb per jpg) with sketches, renderings, plans, sections, elevations, diagrams, and/or other presentation tools to explain their proposal.
- No video files are accepted.
- All information provided in writing must be in English.
- All submissions must be uploaded via the beebreeders.com upload panel. Access information and instructions on how to upload the presentation panel will be issued to participants via email immediately after successful registration.
- Presentation boards must not indicate any information related to individual's/team's identity.

Participants who do not comply with the requirements will be disqualified without refund.

PRESENTATION DELIVERABLES SET

- Urban plan; (suggested scale 1:500 or 1:1000)
- Street elevations; (suggested scale 1:50)
- Primary sections; (suggested scale 1:50)
- Floor plans; (suggested scale 1:50)
- Enlarged sections and elevations highlighting key spaces or relationships; (suggested scale 1:10)
- Details: (suggested scale 1:5)
 - Envelope
 - Key materials
 - Site or landscape
- Axonometrics providing information on building systems or illustrating key architectural concepts;
- Diagrams:
 - Circulation
 - Public versus private space
 - Lighting
 - Landscaping
 - Transportation
 - Energy systems
 - Cityscapes/urban relationships
- Perspectives:
 - Primary interior spaces
 - Primary site locations

Please note the PRESENTATION DELIVERABLES SET listed above is a suggestion only. Participants can choose to use the entire list, a selection from it, or propose a completely different set that would explain their design in the most efficient manner.

RECOMMENDED SUBMISSION CONTENT

- Concept designs which highlight that all aspects of the design are of the highest quality and in keeping with the design brief and the proposed site.
- The main points of proposed plans and sections, multiple internal and external perspectives demonstrating the spatial quality of the building, as well as operational needs and accessibility requirements.
- Demonstration of project feasibility in regards to environment, climate conditions, lifecycle and responsible use of materials.
- Visualizations; artist impressions to illustrate how the proposal fits in with the quality, value, and significance of the proposed context.

The site:

Site size: 176m x 89m

Total area: 15,470 sqm

Township: Botahtaung Township

Ward: No (8) Ward

Design Suggestions:

- Build out of bamboo
- Using parametric design
- Unconventional aesthetics
- New spacial organization
- Highly connect to it's context

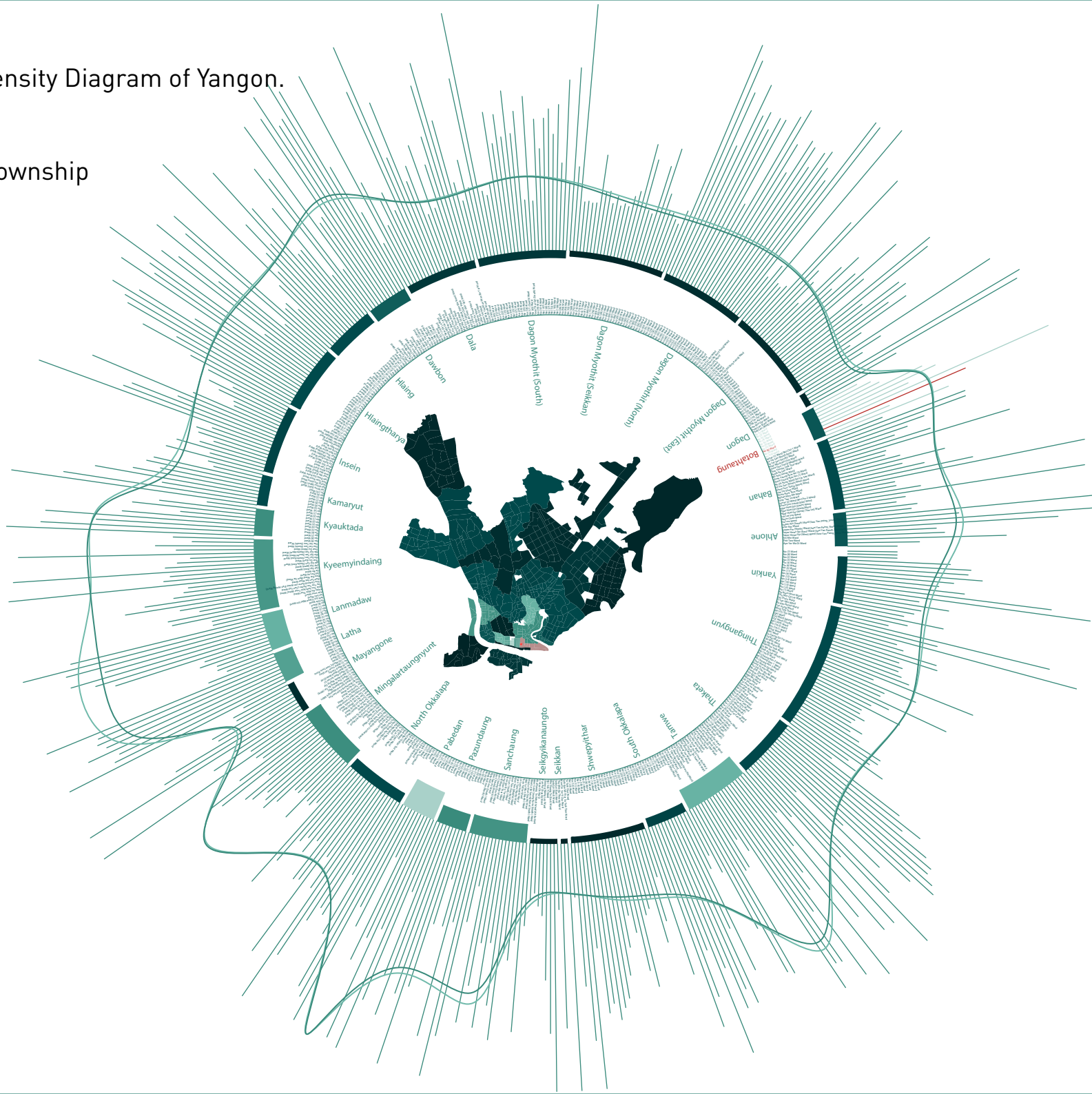
Constraints:

- Max allowed site density 100%
- There is no maximum building height defined
- There is no minimum distance requirement from the road or neighbouring buildings
- Participants may place their building/s at the edge of the site boundary if they find it beneficial to their design proposal
- There are no restrictions for underground construction

200 feet



Our site:
Botahtaung Township
No (2) Ward





1 - REFERENCE:

“100 Towers, 100 Architects” Hong Kong Pavilion at the Venice Biennale

Objective:
Experimenting in new forms of skyscrapers

Thoughts to elaborate:

Concrete post and beam glass towers are the most generic, decontextualized, impersonal forms of architecture, a reflection of modernism trying to cut expenses by simplifying the structure as much as possible.

2



2 - REFERENCE:

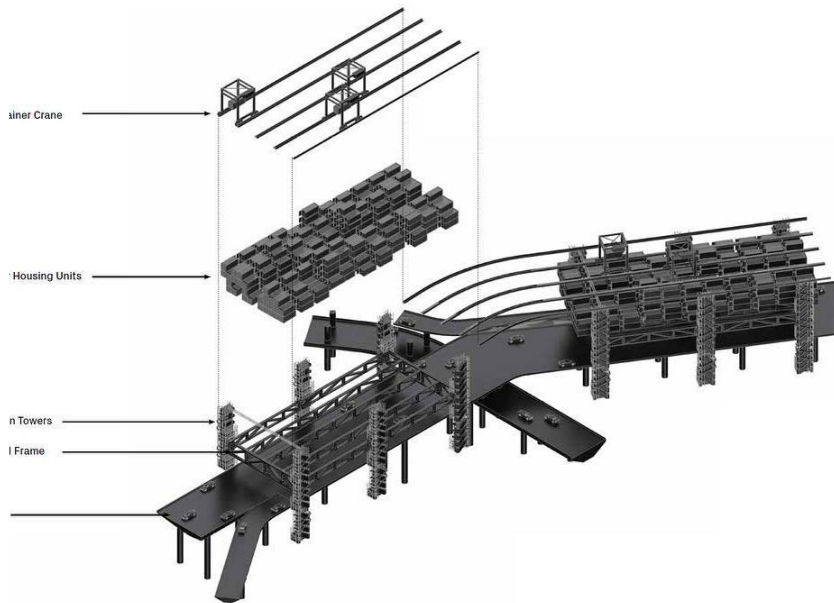
SCI-Arc
Homelessness Charrette

Objective:

Architecture design thinking tackling increasingly urgent social issues

Thoughts to elaborate:

Thinking to re-utilize all the unused, leftover space in the city, such as sidewalks, highways, on top of buildings. Architecture is there shapeless, grows organically through it's context. Welcoming back the homeless people into our lives and cities.



3



3 - REFERENCE:

Promenade des Artistes | Quartier des spectacles

Objective:

Building a flexible framework for others to fill.

Thoughts to elaborate:

Seeing architecture as a tool for engagement, allowing and promoting interaction not just 'citizen-citizen' but also 'citizen-city'. A beautiful humble idea where the architect steps back for a while and acknowledges the equivalent power of ordinary people to change the shape of the city.

4



4 - REFERENCE:

- Kowloon Walled City - aka "City of Arnarchy"

Objective:

Ungoverned, unplanned and organic form of growing.

Thoughts to elaborate:

Often the topic of interest, architects enjoy reflecting on how people use the design differently than it was intended to. In this case, the intention comes directly from the user, the ever growing families living there. The incremental additions are locally decided and are not part of a bigger plan of development. Each family is empowered, free to participate in the uncanny morphing of the whole.



5



5 - REFERENCE:

“Torre de David”
Caracas, Venezuela

Objective:

Re-appropriation of a corporate building by squatters.

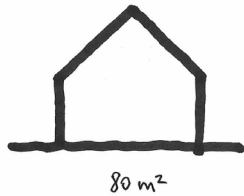
Thoughts to elaborate:

Due to bankruptcy, the unfinished building was left abandoned in the city center. Over 200 families have organized themselves and adapted their way of life according to the typology of the vertical, electrically unequipped structure. The squatters have taken back their rightful place within the center of city in a glass tower.

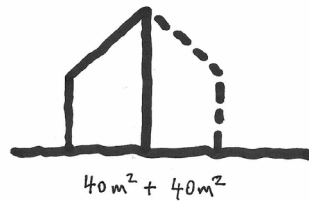
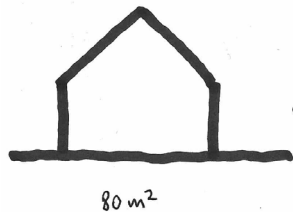
6



MONEY



NO MONEY



6 - REFERENCE:

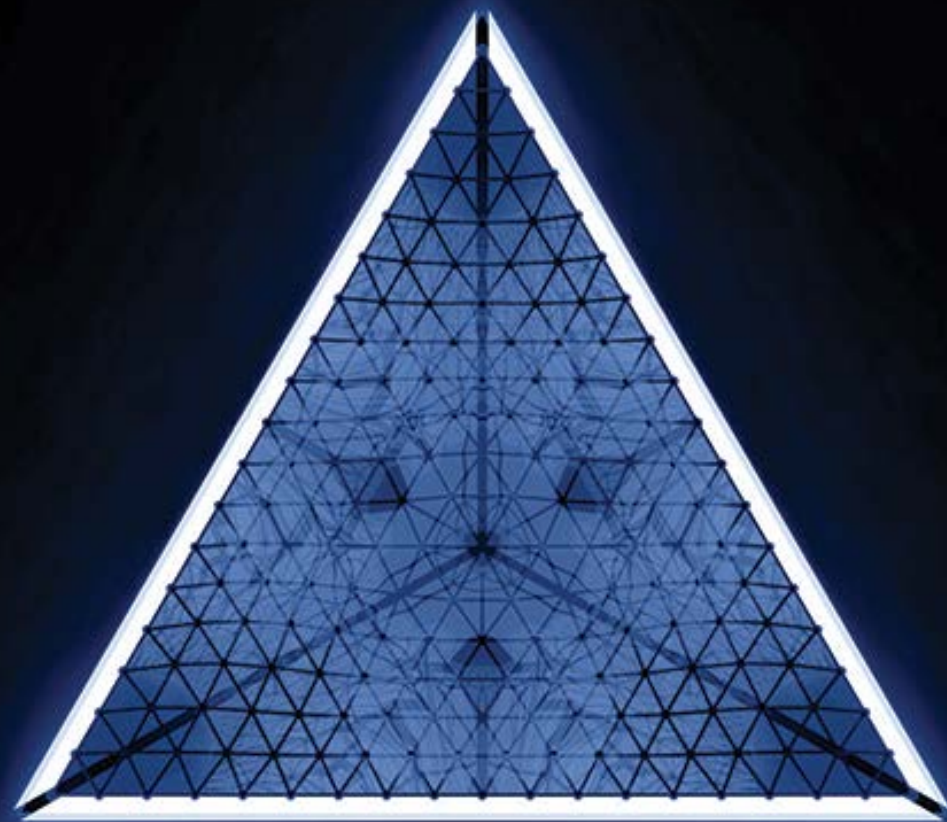
“Half A House” in Chile
Alejandro Aravena

Objective:

Building flexible expandable affordable houses

Thoughts to elaborate:

Giving to house owners the opportunity to grow their space is essential in empowering low income families. They get to decide upon their specific needs what kind of supplementary space are necessary. As the family is growing, so is the house.



Blue Temple